



## Custom Stainless Steel Aluminium Sheet Metal Fabrication Chassis Cabinet Shell

Our Product Introduction

for more products please visit us on [tampin-metal.com](http://tampin-metal.com)

### Basic Information

- Place of Origin: Guangdong, China
- Brand Name: Tampin
- Model Number: OEM
- Minimum Order Quantity: 100 pieces
- Price: \$12.99/pieces 100-499 pieces



### Product Specification

- Material: Carbon Steel
- Process: Laser Cutting Bending Stamping
- Logo: Customized Logo
- MOQ: 100 Pcs
- Application: Electronic, Automotive
- Drawing Format: 3D/CAD/DWG//STEP/PDF
- Surface Finish: Anodized Powder Coating  
Polishing.sandblasting
- Lead Time: Sample: 3-5 Day
- Service: Customized OEM
- Highlight: custom aluminium sheet metal fabrication ,  
aluminium sheet metal fabrication Chassis ,  
custom metal plate cutting Chassis



### More Images

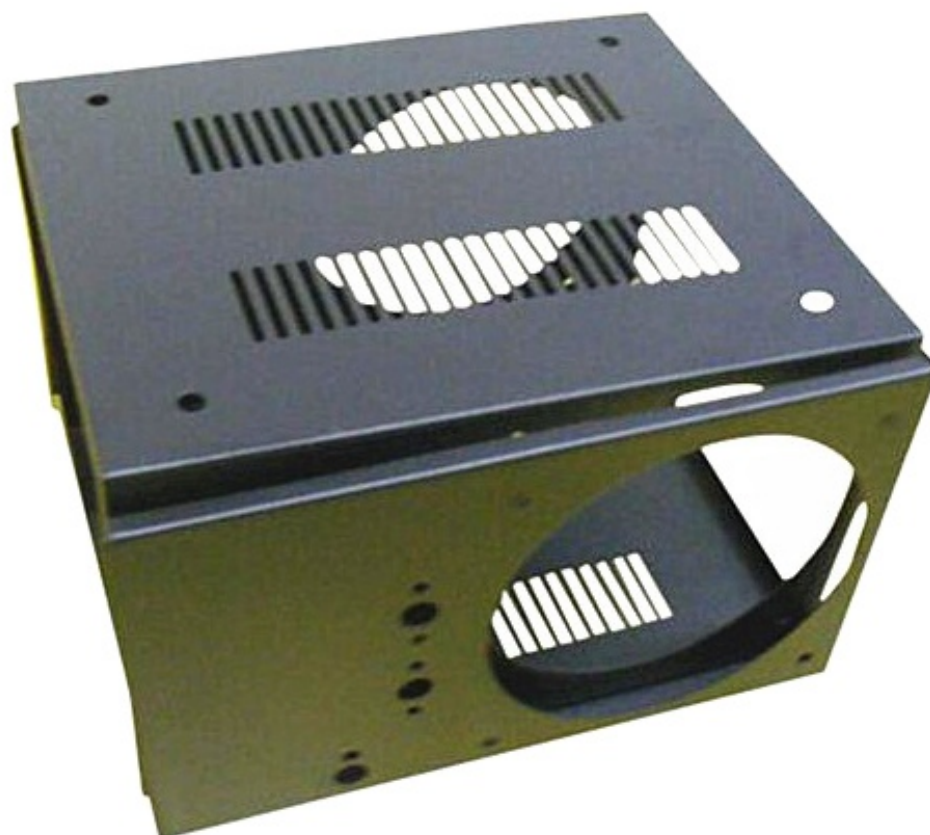


## Product Description

### Specification

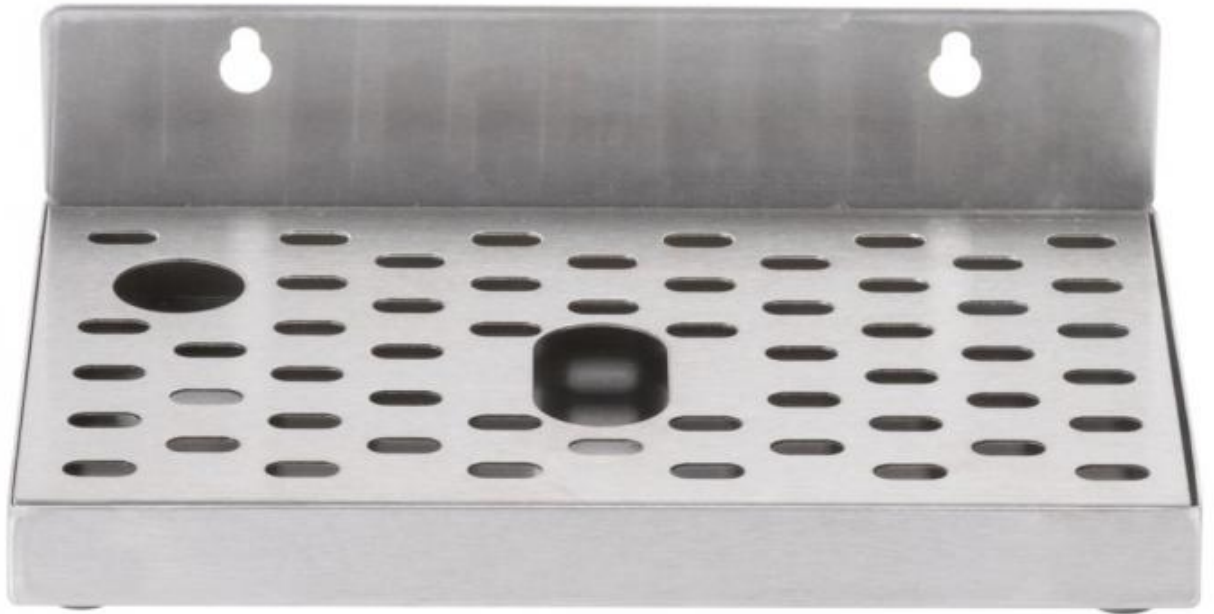
Place of Origin	Guangdong, China
Brand Name	Tampin
Model Number	OEM
Material	Carbon Steel
Process	Laser Cutting Bending Stamping
Logo	Customized Logo
MOQ	100 Pcs
Application	Electronic, Automotive
Drawing format	3D/CAD/DWG//STEP/PDF
Surface finish	Anodized Powder Coating Polishing.sandblasting
Lead time	Sample: 3-5 Day
Service	Customized OEM

### Product Description













## Packing & Delivery

### **P**ACKING AND SHIPPING



To better ensure the safety of your goods, professional, environmentally friendly, convenient and efficient packaging services will be provided.

## Company Profile

Dongguan Tianpin Hardware Technology Co., Ltd. was established in 2008, located in Dongguan, Guangdong Province, enjoying convenient transportation and beautiful environment. Our company covers an area of 2,000 square metres, set production and trade as one, the company has strong technical force, has a number of experienced and many years engaged in molds, stamping, hardware processing, product R&D and other projects of the management, design and technical personnel, the existing number of employees about 50 people. We are specialized in metal stamping, CNC and sheet metal etc. Our company has rich experience in the metal manufacturing industry. Our main products include automotive spare parts, aluminium heat sinks, custom chassis shells and CNC machining products to meet different requirements of different

customers. We have 30 sets of 20-200T stamping equipments to strictly control the quality of our products, and we can reach a monthly output of 500,000 pieces with precision and high speed production efficiency. Our company is good at producing hardware stamping molds, progress molds, drawing molds, and the monthly capacity of molds can be up to about 800 sets of complete industrial chassis molds, and the monthly capacity of products is about 5000 sets of industrial chassis. Adhering to the business principle of mutual benefits, we have had a reliable reputation among our customers because of our professional services, quality products and competitive prices. We warmly welcome customers from at home and abroad to cooperate with us for common success.

## FAQ

### 1. who are we?

We are based in Guangdong, China, start from 2015, sell to Domestic Market(25.00%), North America(15.00%), Western Europe(10.00%), Northern Europe(10.00%), Eastern Europe(10.00%), Southeast Asia(10.00%), Southern Europe(8.00%), Oceania(5.00%), South America(4.00%), Africa(3.00%). There are total about 11-50 people in our office.

### 2. how can we guarantee quality?

Always a pre-production sample before mass production;

Always final inspection before shipment;

### 3. what can you buy from us?

Metal Part, Heatsink, Stamping Part

### 4. why should you buy from us not from other suppliers?

Established in 1989, Tampin Technology is specialized in precision metal stamping and casting, with wide-range production lines cover all kinds of application areas. Strict QC system, reasonable price, fast delivery and best service are all our advantages.

### 5. what services can we provide?

Accepted Delivery Terms: FOB, CFR, CIF, EXW, FAS, CIP, FCA, CPT, DEQ, DDP, DDU, Express Delivery, DAF, DES ;

Accepted Payment Currency: USD, EUR, JPY, CAD, AUD, HKD, GBP, CNY, CHF;

Accepted Payment Type: T/T, L/C, D/P, D/A, MoneyGram, Credit Card, PayPal, Western Union, Cash, Escrow;

Language Spoken: English, Chinese, German



**Dongguan Tianpin Hardware Technology Co., Ltd.**



+86 010 62574092



sales@tampin-metal.com



tampin-metal.com

Rm. 1208, Building D, Taihua Longqi Square, Changping Dist., Beijing, China