

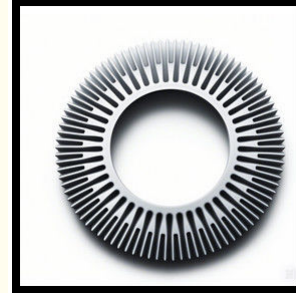
## OEM Custom Hot Aluminum Alloy Heat Sink For High Power LED IC Chip Cooler Radiator Heat Sink For LED COB Light

Our Product Introduction

for more products please visit us on [tampin-metal.com](http://tampin-metal.com)

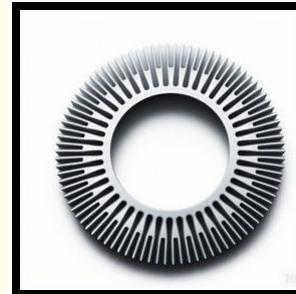
### Basic Information

- Place of Origin: Guangdong, China
- Brand Name: Tampin
- Model Number: OEM
- Minimum Order Quantity: 1000 pieces
- Price: \$0.50/pieces 1000-4999 pieces

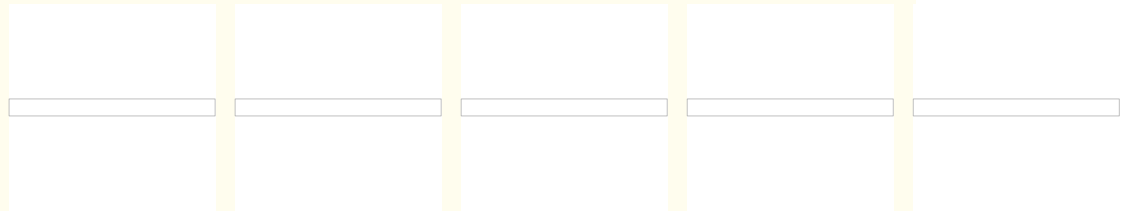


### Product Specification

- Material: Aluminum
- Product Name: Heat Sink/Aluminum Profile
- Application: Circuit Board/ Electronic Equipment
- Color: OEM
- Usage: Equipment Cooling
- MOQ: 1000pcs
- Shape: Custom Shape According To Drawing
- Logo: Accept Customized Logo
- Tolerance: 0.1MM
- Finish: Anodized Surface Treatment
- Highlight: LED COB Light Heat Sink,  
Custom Aluminum Alloy Heat Sink,  
OEM Aluminum Alloy Heat Sink



### More Images



### Product Description

**OEM Custom Hot Aluminum Alloy Heat Sink for High Power LED IC Chip Cooler Radiator Heat Sink for LED COB Light**

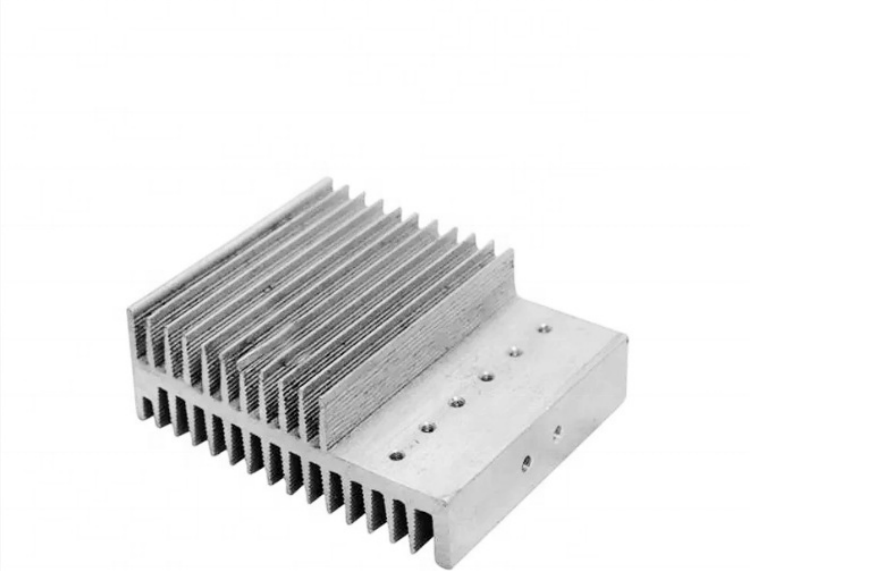
#### Specification

Place of Origin	China Guangdong
Brand Name	Tampin
Model Number	OEM
Material	Aluminum
Product name	Heat Sink/Aluminum Profile
Application	Circuit Board/ Electronic Equipment
Color	OEM
Usage	Equipment Cooling
MOQ	1000pcs
Shape	Custom Shape according to Drawing
Logo	Accept Customized Logo
Tolerance	0.1MM

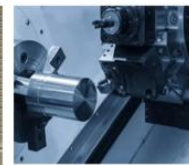
Our Product Introduction

## Product Description

for more products please visit us on [tamph-metal.com](http://tamph-metal.com)







**One-stop Professional Hardware  
Processing Service Platform**

**Professional Equipment**



**Professional  
Customized Service**

From Design, Research And Development To Production, We Are Committed To Providing One-stop Services For More Customers: Insisting On Designing From The Perspective Of Product Production, Fully Meeting The Different Needs Of Enterprises, And Making More Ideas Possible







## Our Company



# OEM/ODM

One-stop professional hardware processing service platform

10+ years production/Customized Experience ☒

30+ Quality inspection department. ☒

30+ Professional R&D team. ☒

International/modern standard factory room. ☒

speciality

Overview

customized

## INSPECTION PROCESS

# EIGHT CORE PROCESSES ONLY IN PURSUIT OF ACHIEVING SUB-2000 DPPM EFFORTS

STANDARDIZED, PROCESS-ORIENTED REFINED PRODUCTION  
STANDARD EFFORTS TO PROVIDE YOU WITH UP TO 99.8%  
QUALIFIED STRING OF PRECISION PARTS



**DFM EVALUATION AND OPTIMIZATION**  
Pre-manufacturing feasibility assessment and optimizer



**CUSTOMIZED OPERATING INSTRUCTIONS**  
Benchmarking, assembly, and inspection criteria development for identification of key dimensions



**SAMPLE FULL SIZE INSPECTION**  
For DFM and work instructions standard full-size inspection proofing process problems



**PRODUCT PROJECT SUMMARY**  
Summarize the proofing problems, close the problem points and continuously optimize the production process!



**COMPLETENESS**  
Strictly formulate packaging standards for product twinning and control the complete delivery of finished products to customers.



**FQC**  
Perform according to AQC standards and requirements



**SPC/CPK**  
Control of special requirements and process implementation of CPK>1.33 for key dimensions



**FIRST INSPECTION /INSPECTION**  
Strictly in accordance with the standard old drawings and work instructions

## PRODUCT CATEGORY

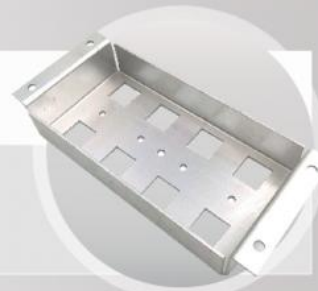
### OUR ADVANTAGES



**STAMPING PARTS**

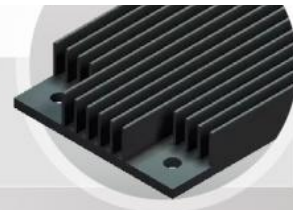


**SHEET METAL FABRICATION**





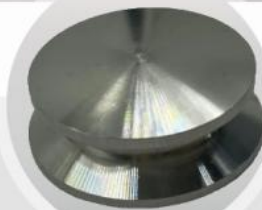
ALUMINUM  
PROFILE



CRATE  
CLIPS



STAILESS STEEL  
PRECISION CASTING

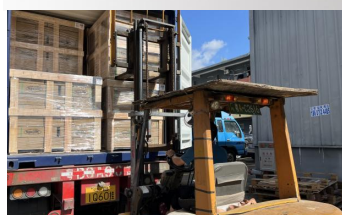


METAL STANT  
FOR COMPUTER



## Packing & Delivery

### PACKING & SHIPPING Product packaging



To better ensure the safety of your goods, professional, environmentally friendly, convenient and efficient packaging services will be provided.

## Company Profile

Dongguan Tianpin Hardware Technology Co., Ltd. was established in 2008, located in Dongguan, Guangdong Province, enjoying convenient transportation and beautiful environment. Our company covers an area of 2,000 square metres, set production and trade as one, the company has strong technical force, has a number of experienced and many years engaged in molds, stamping, hardware processing, product R&D and other projects of the management, design and technical personnel, the existing number of employees about 50 people. We are specialized in metal stamping, CNC and sheet metal etc. Our company has rich experience in the metal manufacturing industry. Our main products include automotive spare parts, aluminium heat sinks, custom chassis shells and CNC machining products to meet different requirements of different customers. We have 30 sets of 20-200T stamping equipments to strictly control the quality of our products, and we can reach a monthly output of 500,000 pieces with precision and high speed production efficiency. Our company is good at producing hardware stamping molds, progress molds, drawing molds, and the monthly capacity of molds can be up to about 800 sets of complete industrial chassis molds, and the monthly capacity of products is about 5000 sets of industrial chassis. Adhering to the business principle of mutual benefits, we have had a reliable reputation among our customers because of our professional services, quality products and competitive prices. We warmly welcome customers from at home and abroad to cooperate with us for common success.

## FAQ

### 1. who are we?

We are based in Guangdong, China, start from 2015, sell to Domestic Market(25.00%), North America(15.00%), Western Europe(10.00%), Northern Europe(10.00%), Eastern Europe(10.00%), Southeast Asia(10.00%), Southern Europe(8.00%), Oceania(5.00%), South America(4.00%), Africa(3.00%). There are total about 11-50 people in our office.

### 2. how can we guarantee quality?

Always a pre-production sample before mass production;

Always final inspection before shipment;

### 3. what can you buy from us?

Metal Part, Heatsink, Stamping Part

### 4. why should you buy from us not from other suppliers?

Established in 1989, Tampin Technology is specialized in precision metal stamping and casting, with wide-range production lines cover all kinds of application areas. Strict QC system, reasonable price, fast delivery and best service are all our advantages.

### 5. what services can we provide?

Accepted Delivery Terms: FOB, CFR, CIF, EXW, FAS, CIP, FCA, CPT, DEQ, DDP, DDU, Express Delivery, DAF, DES ;

Accepted Payment Currency: USD, EUR, JPY, CAD, AUD, HKD, GBP, CNY, CHF;

Accepted Payment Type: T/T, L/C, D/P, D/A, MoneyGram, Credit Card, PayPal, Western Union, Cash, Escrow;

Language Spoken: English, Chinese, German



**Dongguan Tianpin Hardware Technology Co., Ltd.**



+86 010 62574092



sales@tampin-metal.com



tampin-metal.com

Rm. 1208, Building D, Taihua Longqi Square, Changping Dist., Beijing, China