



Various Shapes Beam Connector Brackets Coated Carbon Steel High Load-Bearing

Our Product Introduction

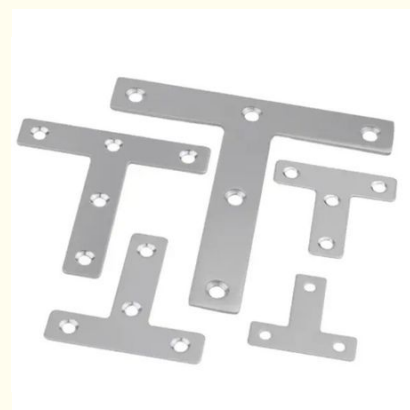
Basic Information

- Place of Origin: Guangdong, China
- Brand Name: TIANPIN
- Model Number: OEM
- Minimum Order Quantity: 300 pieces
- Price: CN¥4.99/pieces 300-999 pieces



Product Specification

- Material: Carbon Steel, Stainless Steel, Aluminum, etc.
- Surface Treatment: Anodized, Powder Coated, Polishing, Deburring, etc.
- Dimension: According To Drawings Or Samples
- Application: Wooden Beam Support
- Size: Various Size Available
- Shape: Different Shapes
- Color: Black, Silver, Customized
- Service: Logo, Package, OEM ODM Customized
- Sample: Yes, But Shipping Cost Need Be Paid In Advance.
- Weight Capacity: Depending On Different Size And Shapes
- Highlight: Various Shapes Beam Connector Brackets, Coated Carbon Steel Beam Connector Brackets, High Load-Bearing Beam Connector Brackets



More Images



for more products please visit us on tampin-metal.com

Product Description

Various Shapes Beam Connector Brackets Coated Carbon Steel High Load-Bearing

Product Specifications

Attribute	Value
Material	Carbon Steel, Stainless Steel, Aluminum
Surface Treatment	Anodized, Powder Coated, Polishing, Deburring
Dimension	Customizable According To Drawings Or Samples
Application	Wooden Beam Support
Size	Various Sizes Available
Shape	Multiple Configurations
Color	Black, Silver, Customized Options
Service	Logo Printing, Custom Packaging, OEM/ODM Services
Sample Availability	Yes (shipping cost required in advance)
Weight Capacity	Varies By Size And Configuration

Product Features

- High-strength carbon steel construction for superior load-bearing capacity
- Multiple surface treatment options for corrosion resistance
- Precision metal stamping and bending fabrication
- Customizable dimensions and shapes to fit specific requirements
- Ideal for wooden beam support and structural connections

Production & Delivery Details

Processing Method	Stamping, Bending
Packaging	Individual bubble wrap protection with carton outer packaging
Payment Terms	T/T, D/A, L/C, D/P, Western Union, MoneyGram
Production Lead Time	25-30 working days
Shipping Unit	Single Item
Package Dimensions	20×20×15 cm
Package Weight	0.2 kg

Product Images

Corner Bracket

Stainless steel material with black coated, no-burrs, anti-rust, sturdy, aesthetic, durable for using long time.



Stainless Steel



Durable



Smooth



Round End



Counterbore Hole



90 Degree









Company Information



Our Company





Professional Customized Service

From Design, Research And Development To Production, We Are Committed To Providing One-stop Services For More Customers: Insisting On Designing From The Perspective Of Product Production, Fully Meeting The Different Needs Of Enterprises, And Making More Ideas Possible



INSPECTION PROCESS

EIGHT CORE PROCESSES ONLY IN PURSUIT OF ACHIEVING SUB-2000 DPPM EFFORTS

STANDARDIZED, PROCESS-ORIENTED REFINED PRODUCTION
STANDARD EFFORTS TO PROVIDE YOU WITH UP TO 99.8%
QUALIFIED STRING OF PRECISION PARTS



DFM EVALUATION AND OPTIMIZATION

Pre-manufacturing feasibility assessment and optimization



CUSTOMIZED OPERATING INSTRUCTIONS

Benchmarking, assembly, and inspection criteria development for identification of key dimensions



SAMPLE FULL SIZE INSPECTION

For DFM and work instructions standard full-size inspection proofing process problems



PRODUCT PROJECT SUMMARY

Summarize the proofing problems, close the problem points and continuously optimize the production process!



COMPLETENESS

Strictly formulate packaging standards for needle product twinning and control the complete delivery of finished products to customers.



FQC

Perform according to AQC standards and requirements



SPC/CPK

Control of special requirements and process implementation of CPK > 1.33 for key dimensions



FIRST INSPECTION / INSPECTION

Strictly in accordance with the standard of drawings and work instructions

PRODUCT CATEGORY

OUR ADVANTAGES



SHEET METAL
FABRICATION

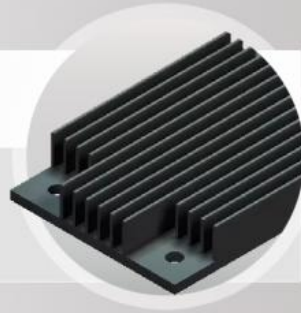


STAMPING
PARTS





*ALUMINUM
PROFILE*



*CRATE
CLIP*



*STAILESS STEEL
PRECISION CASTING*



*METAL STAND
FOR COMPUTER*



SHIPPING & PAYMENT >>



PAYMENT



ESCROW

PayPal

T/T

L/C

SHIPPING

- If the quantity of order is not very big, we could send them to you by express delivery, such as TNT, DHL, UPS OR EMS etc.

If order is big, we will advise you use Air Shipping or Sea Shipping through your nominated forwarder agent. Our long-term cooperated agent also available.



1. Inner plastic bags and bubble bags, then in carton or pallet outside.
2. As per client's requirement.



OUR ADVANTAGE

1. 25 years of Producing & Exporting experience
2. Efficient communication
3. Professional service
4. Carefulness and patience
5. Good at solving problems for customers

OUR SERVICE

1. Professional design team, satisfy customer's requirements.
2. Protecting your ideas of design and all your information.
3. Offer OEM and ODM Service
4. Support customization service
5. On time delivery



FAQ >>

Q

Do you have any MOQ?

A

No limit. More quantity has better price, we will check the best price for you.

Q

What's the delivery time?

A

Generally within 7-15 days, we will arrange for you as soon as possible.

Q

What can you buy from us?

A

Metal Stamping/Clamp/Crate Clip/CNC Machining/Monitor Stand/Sheet Metal Fabrication

Q

Which shipping method do you usually use?

A

By train/sea DDP, by express, we can also ship with your own forwarder.

Q

How do I know if you have shipped my order?

A

Tracking number will be provided as soon as your order is shipped.

Q

Why should you buy from us not from other suppliers?

A

Established in 2008, Tianpin Technology is specialized in precision metal stamping& sheet metal fabrication, with wide-range production lines cover all kinds of application areas. Strict QC system, reasonable price, fast delivery and best service are all our advantages.

WELCOME TO TIANPIN

TIANPIN

+86-131 2039 1637

sales@tianpin-metal.com

Building B, No.1 Lihua Road, Yutangwei Village, Qingli Town, Dongguan City 523649, Guang Dong, China

CONTACT US

Feel free to contact us at any time to learn more about our capabilities and services. We look forward to collaborating with you!

Dongguan Tianpin Hardware Technology Co., Ltd

[+86 010 62574092](tel:+8601062574092)sales@tampin-metal.comtampin-metal.com

Rm. 1208, Building D, Taihua Longqi Square, Changping Dist., Beijing, China