



TIANPIN Strict Geometric Tolerances CNC Machined Parts Precision Engineering Excellence Repeatability Surface Finishes

Our Product Introduction

for more products please visit us on tampin-metal.com

Basic Information

- Minimum Order Quantity: 200 pieces
- Price: \$0.09-0.35 / piece



Product Specification

- 原 地: Guangdong, China
- 品牌: TIANPIN
- 型号: OEM
- Material: Stainless Steel, Aluminum, Carbon Steel, etc.
- Accuracy: $\pm 0.1\text{mm}$
- Application: Industrial
- Surface Treatment: Polishing, Powder Coating, Galvanized, etc.
- Processing Way: CNC Machining
- Size: Customized
- Color: Silver, Black, Custom
- Sample: Available
- Service: Customize ODM OEM
- Thickness: 0.5mm/0.8mm/1.0mm/2.0mm/2.5mm
- Highlight: **Repeatability CNC Machined Parts, Strict Geometric Tolerances CNC Machined Parts**



More Images



Our Product

Product Description

Precision CNC Machined Parts with Strict Geometric Tolerances

TIANPIN delivers engineering excellence through high-precision CNC machining services, offering repeatable accuracy and superior surface finishes for industrial applications.

Product Specifications

Origin	Guangdong, China
Brand	TIANPIN
Model	OEM
Material	Stainless Steel, Aluminum, Carbon Steel, etc.
Accuracy	±0.1mm
Application	Industrial
Surface Treatment	Polishing, Powder Coating, Galvanized, etc.
Processing Method	CNC Machining
Size	Customized
Color	Silver, Black, Custom
Sample Availability	Available
Service	Customize ODM OEM
Thickness Options	0.5mm/0.8mm/1.0mm/2.0mm/2.5mm

Detailed Product Description

We specialize in OEM custom CNC machining services for precision metal parts including stainless steel, aluminum, and carbon steel components with various surface finishes.

Material Options: Stainless Steel, Aluminum, Carbon Steel, etc.

Surface Finishes: Powder Coating, Polishing, Anodized, Electroplating

Processing Methods: Stamping, Bending, CNC Machining

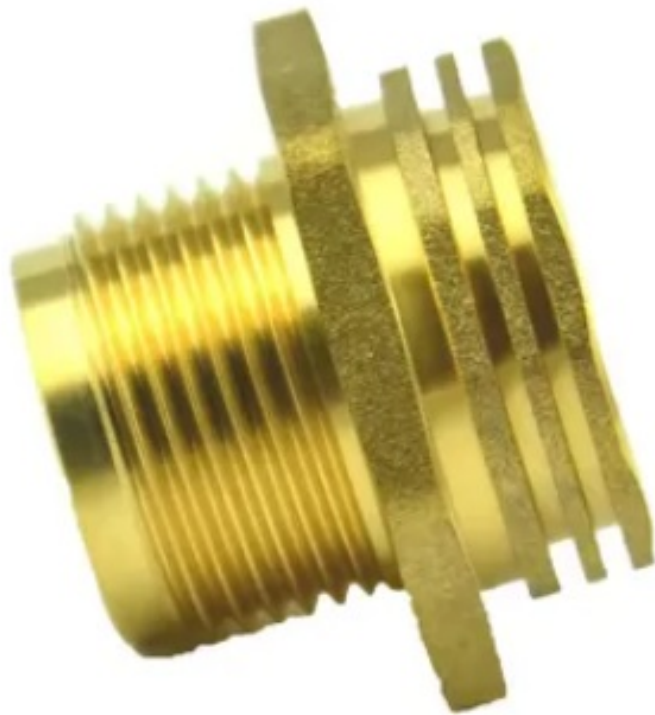
Packaging: Bubble wrapped individually to prevent damage and scratches during transport, then packed in cartons

Payment Terms: T/T, D/A, L/C, D/P, Western Union, MoneyGram

Delivery Time: 25-30 work days

Product Images









Packing & Delivery Information

Selling Unit	Single Item
Package Size	20×20×15 cm
Gross Weight	0.2 kg



Our Manufacturing Capabilities



Our Company



Professional Customized Service

From Design, Research And Development To Production, We Are Committed To Providing One-stop Services For More Customers: Insisting On Designing From The Perspective Of Product Production, Fully Meeting The Different Needs Of Enterprises, And Making More Ideas Possible



INSPECTION PROCESS

EIGHT CORE PROCESSES ONLY IN PURSUIT OF ACHIEVING SUB-2000 DPPM EFFORTS

STANDARDIZED, PROCESS-ORIENTED REFINED PRODUCTION
STANDARD EFFORTS TO PROVIDE YOU WITH UP TO 99.8%
QUALIFIED STRING OF PRECISION PARTS



DFM EVALUATION AND OPTIMIZATION

Pre-manufacturing feasibility assessment and optimization



CUSTOMIZED OPERATING INSTRUCTIONS

Benchmarking, assembly, and inspection criteria development for identification of key dimensions



SAMPLE FULL SIZE INSPECTION

For DFM and work instructions standard full-size inspection proofing process problems



PRODUCT PROJECT SUMMARY

Summarize the proofing problems, close the problem points and continuously optimize the production process!



COMPLETENESS

Strictly formulate packaging standards for needle product twinning and control the complete delivery of finished products to customers.



FQC

Perform according to AQC standards and requirements



SPC/CPK

Control of special requirements and process implementation of CPK > 1.33 for key dimensions



FIRST INSPECTION /INSPECTION

Strictly in accordance with the standard of drawings and work instructions

PRODUCT CATEGORY

OUR ADVANTAGES



SHEET METAL FABRICATION



STAMPING

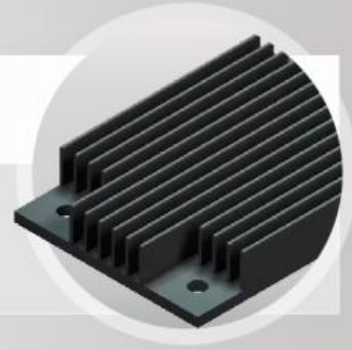




STAMPING
PARTS



ALUMINUM
PROFILE



CRATE
CLIP



STAINLESS STEEL
PRECISION CASTING



METAL STAND
FOR COMPUTER



SHIPPING & PAYMENT >>



PAYMENT



ESCROW

PayPal™

T/T

L/C

SHIPPING

- If the quantity of order is not very big, we could send them to you by express delivery, such as TNT, DHL, UPS OR EMS etc.

If order is big, we will advise you use Air Shipping or Sea Shipping through your nominated forwarder agent. Our long-term cooperated agent also available.



1. Inner plastic bags and bubble bags, then in carton or pallet outside.
2. As per client's requirement.



OUR ADVANTAGE

1. 25 years of Producing & Exporting experience
2. Efficient communication
3. Professional service
4. Carefulness and patience
5. Good at solving problems for customers

OUR SERVICE

1. Professional design team, satisfy customer's requirements.
2. Protecting your ideas of design and all your information.
3. Offer OEM and ODM Service
4. Support customization service
5. On time delivery



FAQ >>

- Q** Do you have any MOQ?
- A** No limit. More quantity has better price, we will check the best price for you.
- Q** What's the delivery time?
- A** Generally within 7-15 days, we will arrange for you as soon as possible.
- Q** What can you buy from us?
- A** Metal Stamping/Clamp/Crate Clip/CNC Machining/Monitor Stand/Sheet Metal Fabrication
- Q** Which shipping method do you usually use?
- A** By train/sea DDP, by express, we can also ship with your own forwarder.
- Q** How do I know if you have shipped my order?
- A** Tracking number will be provided as soon as your order is shipped.
- Q** Why should you buy from us not from other suppliers?
- A** Established in 2008, Tianpin Technology is specialized in precision metal stamping& sheet metal fabrication, with wide-range production lines cover all kinds of application areas. Strict QC system, reasonable price, fast delivery and best service are all our advantages.

WELCOME TO **TIANPIN**



TIANPIN

+86-131 2039 1637
sales@tampin-metal.com

Building B, No.1 Lihua Road, Yuliangwei Village, Qingli Town,
Dongguan City 523649, Guang Dong, China

CONTACT US

Feel free to contact us at any time to learn more about our capabilities and services.
We look forward to collaborating with you!



Dongguan Tianpin Hardware Technology Co., Ltd.



+86 010 62574092



sales@tampin-metal.com



tampin-metal.com

Rm. 1208, Building D, Taihua Longqi Square, Changping Dist., Beijing, China