

Deep Drawn Parts Cold-rolled Steel Brass Aluminum Polished Anodized

Our Product Introduction

for more products please visit us on tampin-metal.com

Basic Information

- Place of Origin: Guangdong, China
- Brand Name: \
- Model Number: OEM
- Minimum Order Quantity: 1000 pieces
- Price: \$0.55/pieces 1000-2999 pieces

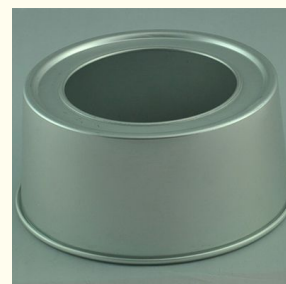


Product Specification

- Product Name: Stainless Steel Deep Drawn Parts
- Material: Stainless Steel, Aluminium
- Finish: Polishing, Zinc Plated, Nickle Plated
- Color: Customized Color
- Process: Stamping, Deep Drawing
- Application: Industry
- Service: Customized OEM ODM
- Keyword: Deep Drawing Part
- MOQ: 500pcs
- Highlight: **Polished Anodized Deep Drawn Parts,
Cold-rolled Steel Deep Drawn Parts,
Brass Aluminum Deep Drawn Parts**



More Images



Product Description

Custom Sheet Metal Fabrication Aluminum Stamping Stainless Steel Deep Drawing Parts

Product Specifications

Attribute	Value
Product Name	Stainless steel deep drawn parts
Material	Stainless Steel, Aluminum
Finish	Polishing, Zinc Plated, Nickel Plated
Color	Customized Color
Process	Stamping, Deep Drawing
Application	Industrial
Service	Customized OEM/ODM
Minimum Order Quantity	500pcs

Product Features







Technical Specifications

Material: Carbon Steel, Stainless Steel, Brass, Aluminum, Cold-rolled steel

Finish: Polished, Anodized, Zinc Plated, Powder Coating

Drawing Formation: PDF, CAD/DWG/DXF, IGS/STP etc.

Inspection Equipment: Micrometer, Calipers, Tensile Machine, Spectrograph, Three-Dimensional etc.

Tolerance: According to actual conditions

Packing & Delivery



OEM/ODM SERVICE



Format of the drawing: PDF, JPEG, CAD, IJS, STP, SOLIDWORKS, ETC.

Custom Logo: Acceptable, such as company name, website, principle and so on.

Sample time: 10-25 days. But it depends on the order quantity and the specific product. Different product may has different lead time.

Advantages for Mold: One time paid, Reusable, Quick to build.

QC AND AFTER-SALES SERVICE

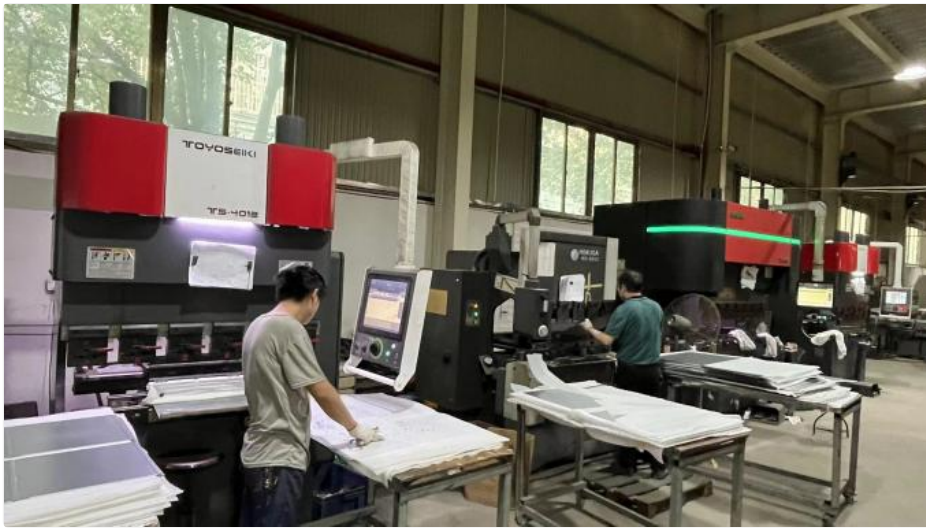


1. First article inspect will be made for each new product.
2. Strict inspection before shipment.
3. Material and measurement reports will be provided.
4. If there is quality problem, we will replace goods or return funds.

We have an efficient logistics system. If you don't have your own forwarder, we will provide you with the most suitable transport solution for your needs.

Company Profile





Frequently Asked Questions

Do you have any MOQ?

No limit. More quantity has better price, we will check the best price for you.

What's the delivery time?

Generally within 7-15 days, we will arrange for you as soon as possible.

What can you buy from us?

Metal Stamping/Toggle Latch/Casting/Clamp/Crate Clip/Server Chassis

Which shipping method do you usually use?

By train/sea DDP, by express, we can also ship with your own forwarder.

How do I know if you have shipped my order?

Tracking number will be provided as soon as your order is shipped.



Dongguan Tianpin Hardware Technology Co., Ltd.



+86 010 62574092



sales@tampin-metal.com



tampin-metal.com

Rm. 1208, Building D, Taihua Longqi Square, Changping Dist., Beijing, China