

Carbon Steel Sheet Metal Enclosures for Electronics Automotive

Our Product Introduction

for more products please visit us on tampin-metal.com

Basic Information

- Place of Origin: Guangdong, China
- Brand Name: Tampin
- Model Number: OEM
- Minimum Order Quantity: 100
- Price: \$9.99-12.99



Product Specification

- Material: Carbon Steel
- Process: Laser Cutting Bending Stamping
- Logo: Customized Logo
- MOQ: 100 Pcs
- Application: Electronic, Automotive
- Drawing Format: 3D/CAD/DWG//STEP/PDF
- Surface Finish: Anodized Powder Coating
Polishing.sandblasting
- Lead Time: Sample: 3-5 Day
- Service: Customized OEM
- Highlight: Accessories Bending Sheet Metal Chassis,
Cabinet Shell Sheet Metal Chassis,
Mold Processing Devices Sheet Metal Chassis



More Images



Product Description

Sheet Metal Chassis Accessories Bending Cabinet Shell Mold Processing Devices Enclosure Covers

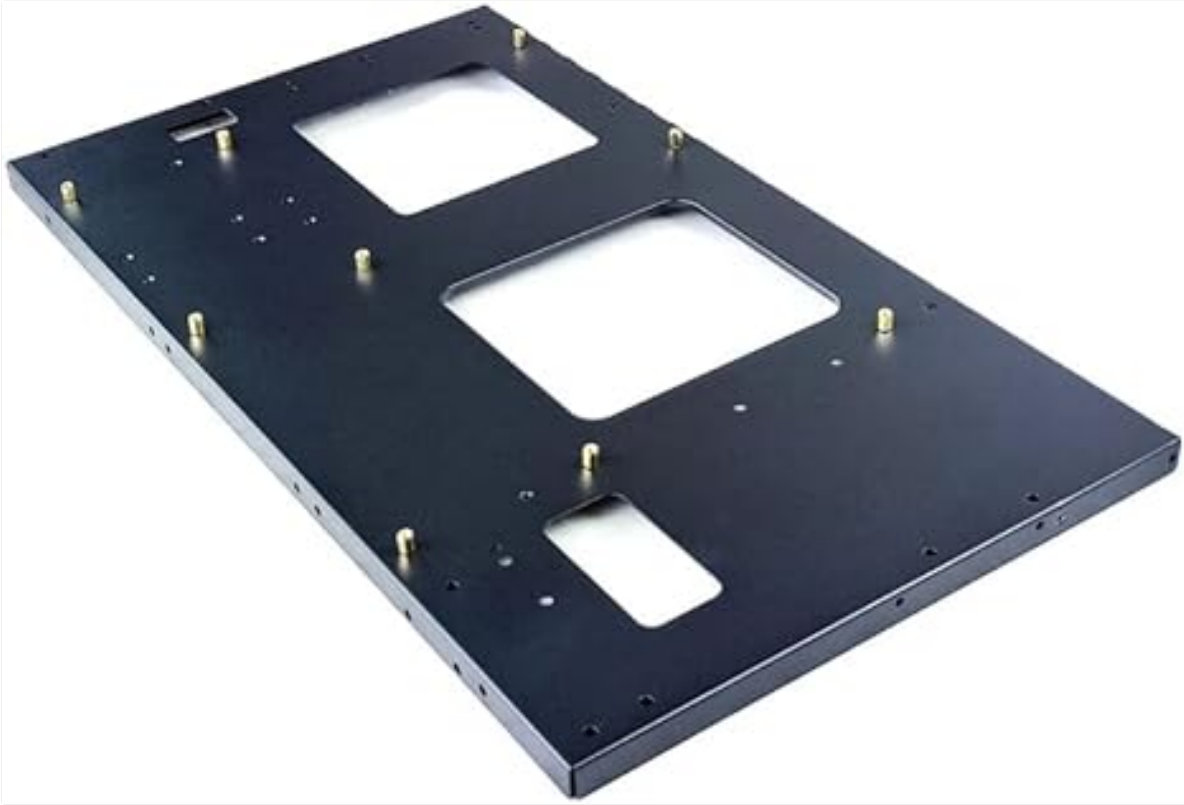
Product Specifications

Attribute	Value
Material	Carbon Steel
Process	Laser Cutting Bending Stamping
Logo	Customized Logo
MOQ	100 Pcs
Application	Electronic, Automotive
Drawing format	3D/CAD/DWG/STEP/PDF
Surface finish	Anodized, Powder Coating, Polishing, Sandblasting
Lead time	Sample: 3-5 Days
Service	Customized OEM

Product Features

- Precision sheet metal fabrication for industrial applications
- Customizable designs to meet specific requirements
- Multiple surface treatment options available
- Wide range of applications in electronics and automotive industries
- Strict quality control throughout production process

Product Images









PACKING AND SHIPPING



To ensure the safety of your goods, we provide professional, environmentally friendly, and efficient packaging services.

Company Profile

Dongguan Tianpin Hardware Technology Co., Ltd. was established in 2008 and is located in Dongguan, Guangdong Province. Our 2,000 square meter facility combines production and trade operations, with approximately 50 employees including experienced management, design, and technical personnel specializing in molds, stamping, and hardware processing.

We specialize in metal stamping, CNC machining, and sheet metal fabrication, producing automotive spare parts, aluminum heat sinks, custom chassis shells, and CNC machining products. With 30 sets of 20-200T stamping equipment, we maintain a monthly output of 500,000 pieces while ensuring precision and high production efficiency.

Our capabilities include producing 800 sets of industrial chassis molds monthly and approximately 5,000 sets of industrial chassis products. We are committed to quality products, professional services, and competitive prices, building reliable relationships with customers worldwide.

Frequently Asked Questions

Who are we?

Based in Guangdong, China since 2015, we serve domestic and international markets including North America, Europe, Southeast Asia, and more. Our team consists of 11-50 professionals.

How do we guarantee quality?

We conduct pre-production samples and final inspections before shipment to ensure product quality.

What products do we offer?

We specialize in Metal Parts, Heatsinks, and Stamping Parts for various industrial applications.

Why choose us?

With experience since 1989, we offer precision metal stamping and casting with strict quality control, competitive pricing, fast delivery, and excellent service.

What services do we provide?

We accept various delivery terms (FOB, CIF, EXW, etc.), payment methods (T/T, L/C, PayPal, etc.), and currencies (USD, EUR, JPY, etc.). Our team communicates in English, Chinese, and German.



Dongguan Tianpin Hardware Technology Co., Ltd.



+86 010 62574092



sales@tampin-metal.com



tampin-metal.com

Rm. 1208, Building D, Taihua Longqi Square, Changping Dist., Beijing, China