

Metal Stamping Parts Chassis Shell Metal Hardware Processing Electronic Automotive Application

Our Product Introduction

for more products please visit us on tampin-metal.com

Basic Information

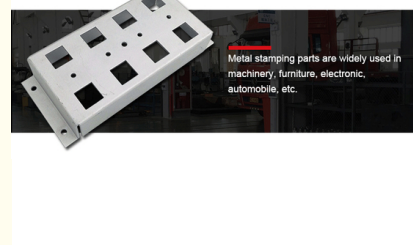
- Place of Origin: Guangdong, China
- Brand Name: Tampin
- Model Number: OEM
- Minimum Order Quantity: 100
- Price: \$9.99-12.99



Product Specification

- Material: Carbon Steel
- Process: Laser Cutting Bending Stamping
- Logo: Customized Logo
- MOQ: 100 Pcs
- Application: Electronic, Automotive
- Drawing Format: 3D/CAD/DWG//STEP/PDF
- Surface Finish: Anodized Powder Coating
Polishing.sandblasting
- Lead Time: Sample: 3-5 Day
- Service: Customized OEM
- Highlight: **Hardware Processing Metal Stamping Parts,
Chassis Shell Metal Metal Stamping Parts,
Electronic Automotive Application Metal
Stamping Parts**

APPLICATIONS



More Images



Product Description

Metal Stamping Parts Chassis Shell for Electronic & Automotive Applications

Product Specifications

Attribute	Value
Material	Carbon Steel
Process	Laser Cutting, Bending, Stamping
Logo	Customized Logo Available
MOQ	100 Pcs
Application	Electronic, Automotive
Drawing Format	3D/CAD/DWG/STEP/PDF
Surface Finish	Anodized, Powder Coating, Polishing, Sandblasting
Lead Time (Sample)	3-5 Days
Service	Customized OEM
Place of Origin	Guangdong, China
Brand Name	Tampin

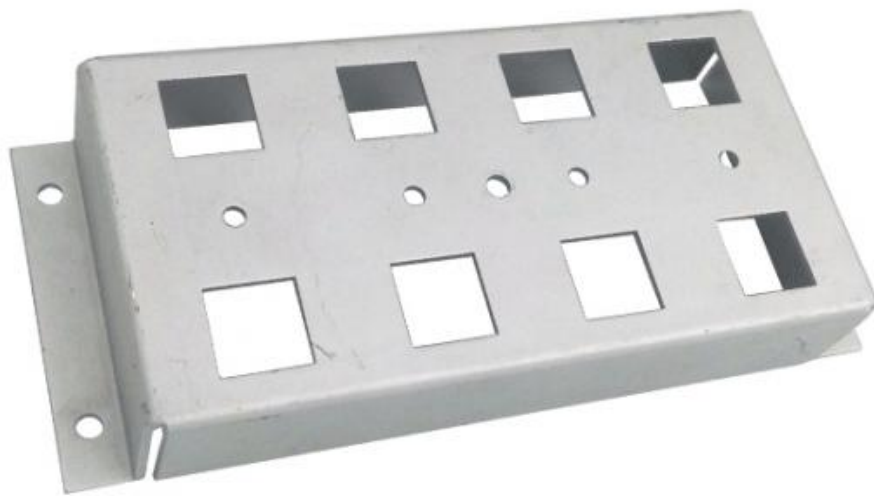
Product Images



APPPLICATIONS



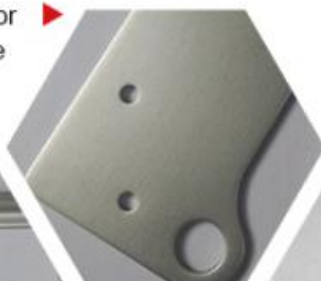
PRODUCT DISPLAY



PRODUCT FEATURES



(1) Various choices for materials and surface treatment.



(3) Extensive application



(2) Good wear resistance



(5) Small tolerance

(4) High precision



CUSTOMIZED METAL STAMPING PART



- ✓ A variety of specifications
- ✓ Various choices for materials
- ✓ Extensive application





Packing & Delivery

PACKING AND SHIPPING





We provide professional, environmentally friendly, and efficient packaging services to ensure the safety of your goods during transportation.

Company Profile

Dongguan Tianpin Hardware Technology Co., Ltd. was established in 2008 and is located in Dongguan, Guangdong Province. With a facility covering 2,000 square meters, we integrate production and trade operations.

Our technical team includes experienced professionals in mold design, stamping, hardware processing, and product R&D. With approximately 50 employees, we specialize in metal stamping, CNC machining, and sheet metal fabrication.

Our production capabilities include:

30 sets of 20-200T stamping equipment

Monthly output capacity of 500,000 pieces

800 sets of industrial chassis molds monthly

5,000 sets of industrial chassis products monthly

We serve various industries with products including automotive spare parts, aluminum heat sinks, custom chassis shells, and CNC machining components. Our commitment to quality, competitive pricing, and professional service has earned us a reliable reputation among our customers worldwide.

Frequently Asked Questions

Who are we?

We are based in Guangdong, China, serving domestic and international markets including North America, Europe, Southeast Asia, and more. Our team consists of 11-50 professionals dedicated to quality metal manufacturing.

How do we guarantee quality?

We implement strict quality control measures including pre-production samples and final inspection before shipment to ensure product excellence.

What products do we offer?

Our product range includes metal parts, heat sinks, and precision stamping components for various industrial applications.

Why choose us?

With our extensive experience since 1989, we offer precision metal stamping and casting solutions with competitive pricing, fast delivery, and excellent service.

What services do we provide?

We accept various delivery terms (FOB, CIF, EXW, etc.) and payment methods (T/T, L/C, PayPal, etc.), with multilingual support in English, Chinese, and German.



Dongguan Tianpin Hardware Technology Co., Ltd.



+86 010 62574092



sales@tampin-metal.com



tampin-metal.com

Rm. 1208, Building D, Taihua Longqi Square, Changping Dist., Beijing, China

