

## Sheet Metal Parts Computer Case Chassis Carbon Steel Customized Logo

Our Product Introduction

for more products please visit us on [tampin-metal.com](http://tampin-metal.com)

### Basic Information

- Place of Origin: Guangdong, China
- Brand Name: Tempin
- Model Number: OEM
- Minimum Order Quantity: 100
- Price: \$9.99-12.99

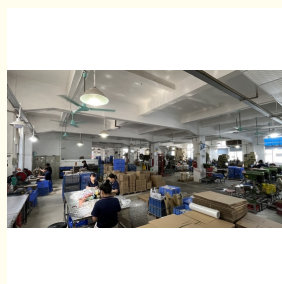


### Product Specification

- Material: Carbon Steel
- Process: Laser Cutting Bending Stamping
- Logo: Customized Logo
- MOQ: 100 Pcs
- Application: Electronic, Automotive
- Drawing Format: 3D/CAD/DWG//STEP/PDF
- Surface Finish: Anodized Powder Coating  
Polishing.sandblasting
- Lead Time: Sample: 3-5 Day
- Service: Customized OEM
- Highlight: **Sheet Metal Parts Computer Case Chassis,  
Customized Logo Computer Case Chassis,  
Carbon Steel Computer Case Chassis**



### More Images



Product Description

Sheet Metal Parts Computer Case Chassis Carbon Steel Customized Logo

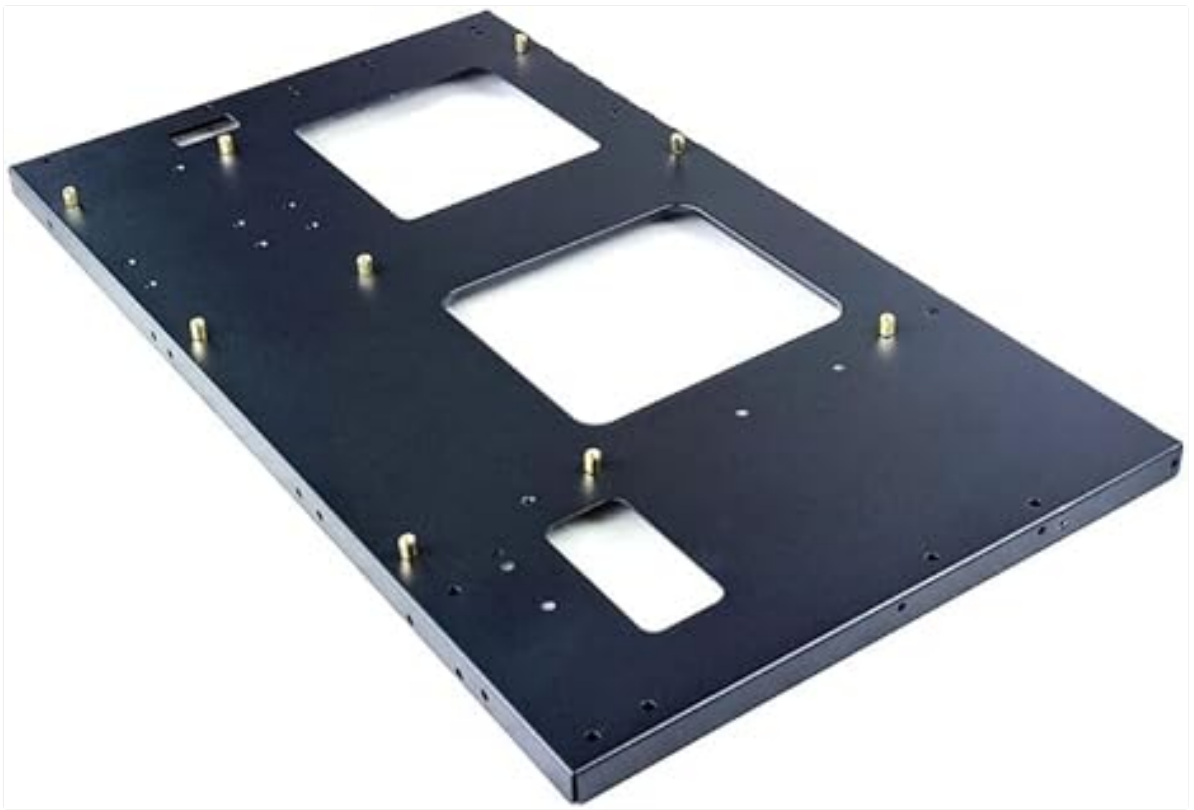
Product Specifications

Attribute	Value
Material	Carbon Steel
Process	Laser Cutting Bending Stamping
Logo	Customized Logo
MOQ	100 Pcs
Application	Electronic, Automotive
Drawing format	3D/CAD/DWG/STEP/PDF
Surface finish	Anodized, Powder Coating, Polishing, Sandblasting
Lead time	Sample: 3-5 Days
Service	Customized OEM

Product Details

**Place of Origin:** Guangdong, China  
**Brand Name:** Tampin  
**Model Number:** OEM









## PACKING AND SHIPPING



To ensure product safety during transit, we provide professional, environmentally friendly, and efficient packaging solutions.

### Company Profile

Dongguan Tianpin Hardware Technology Co., Ltd. was established in 2008 and is located in Dongguan, Guangdong Province. Our 2,000 square meter facility combines production and trade operations, staffed by approximately 50 experienced professionals specializing in metal stamping, CNC machining, and sheet metal fabrication.

Our production capabilities include:

- 30 sets of 20-200T stamping equipment

- Monthly output capacity of 500,000 precision parts

- 800 sets of industrial chassis molds monthly

- 5,000 sets of industrial chassis products monthly

We specialize in automotive spare parts, aluminum heat sinks, custom chassis shells, and CNC machining products. Our strict quality control, competitive pricing, and reliable service have earned us an excellent reputation in the metal manufacturing industry.

## Frequently Asked Questions

### 1. Who are we?

Based in Guangdong, China since 2015, we serve global markets including North America, Europe, Asia, and more. Our team consists of 11-50 professionals dedicated to quality metal manufacturing.

### 2. How do we guarantee quality?

Pre-production samples for approval

Final inspection before shipment

### 3. What products do we offer?

Metal parts, heat sinks, and precision stamping components for various industrial applications.

### 4. Why choose us?

With experience since 1989, we offer strict quality control, competitive pricing, fast delivery, and excellent service in precision metal stamping and casting.

### 5. What services do we provide?

**Delivery Terms:** FOB, CFR, CIF, EXW, and more

**Payment Methods:** T/T, L/C, PayPal, Western Union, etc.

**Languages:** English, Chinese, German



**Dongguan Tianpin Hardware Technology Co., Ltd.**



+86 010 62574092



sales@tampin-metal.com



tampin-metal.com

Rm. 1208, Building D, Taihua Longqi Square, Changping Dist., Beijing, China