

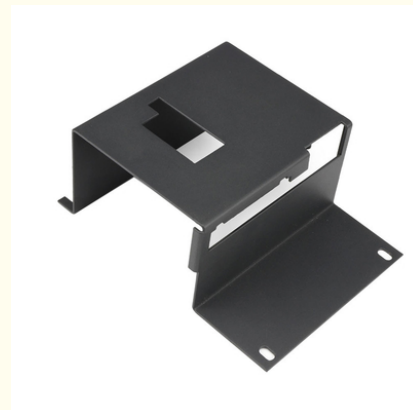
Custom Sheet Metal Fabrication for OEM and ODM Projects-Manufacturing of Chassis Shells and Metal Hardware Processing

Our Product Introduction

for more products please visit us on tampin-metal.com

Basic Information

- Place of Origin: Guangdong, China
- Brand Name: Tampin
- Model Number: OEM
- Minimum Order Quantity: 100
- Price: \$0.19-0.30

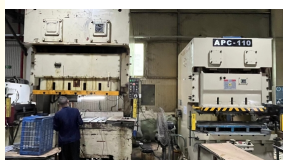


Product Specification

- Material: Carbon Steel
- Process: Laser Cutting Bending Stamping
- Logo: Customized Logo
- MOQ: 100 Pcs
- Application: Electronic, Automotive
- Drawing Format: 3D/CAD/DWG//STEP/PDF
- Surface Finish: Anodized Powder Coating
Polishing.sandblasting
- Lead Time: Sample: 3-5 Day
- Service: Customized OEM
- Highlight: custom sheet metal fabrication services ,
OEM sheet metal chassis shells,
ODM metal hardware processing



More Images



Product Description

Custom Sheet Metal Fabrication for OEM and ODM Projects

Manufacturing of Chassis Shells and Metal Hardware Processing

Professional custom sheet metal fabrication services for OEM and ODM projects, specializing in chassis shells and precision metal hardware processing.

Product Specifications

Attribute	Value
Material	Carbon Steel
Process	Laser Cutting, Bending, Stamping
Logo	Customized Logo
MOQ	100 Pcs
Application	Electronic, Automotive
Drawing format	3D/CAD/DWG/STEP/PDF
Surface finish	Anodized, Powder Coating, Polishing, Sandblasting
Lead time	Sample: 3-5 Days
Service	Customized OEM

Product Gallery











Packaging & Delivery



We provide professional, environmentally friendly, and efficient packaging services to ensure the safety of your goods during transportation.

Company Profile

Dongguan Tianpin Hardware Technology Co., Ltd. was established in 2008 and is located in Dongguan, Guangdong Province. With 2,000 square meters of production space and about 50 employees, we specialize in metal stamping, CNC machining, and sheet metal fabrication. Our main products include automotive spare parts, aluminum heat sinks, custom chassis shells, and CNC machining products.

We maintain strict quality control with our 30 sets of 20-200T stamping equipment, achieving a monthly output of 500,000 pieces with precision and high-speed production efficiency. Our monthly capacity includes approximately 800 sets of complete industrial chassis molds and 5,000 sets of industrial chassis products.

Frequently Asked Questions

Who are we?

We are based in Guangdong, China, serving domestic and international markets including North America, Europe, Southeast Asia, and more. Our team consists of 11-50 professionals dedicated to quality metal fabrication.

How can we guarantee quality?

We implement strict quality control measures including pre-production samples and final inspection before shipment.

What can you buy from us?

We specialize in Metal Parts, Heatsinks, and Stamping Parts for various industrial applications.

Why choose us?

With experience since 1989, we offer strict QC systems, competitive pricing, fast delivery, and excellent service in precision metal stamping and casting.

What services do we provide?

We accept various delivery terms (FOB, CIF, EXW, etc.) and payment methods (T/T, L/C, PayPal, etc.), and communicate in multiple languages including English, Chinese, and German.



Dongguan Tianpin Hardware Technology Co., Ltd.



+86 010 62574092



sales@tampin-metal.com



tampin-metal.com

Rm. 1208, Building D, Taihua Longqi Square, Changping Dist., Beijing, China