



Customized Factory Laser Cutting for Sheet Metal Fabrication Professional Equipment for Mass Production

Our Product Introduction

for more products please visit us on tampin-metal.com

Basic Information

- Place of Origin: Guangdong, China
- Brand Name: Tampin
- Model Number: OEM
- Minimum Order Quantity: 100
- Price: \$1.50-2



Product Specification

- Material: Carbon Steel
- Process: Laser Cutting Bending Stamping
- Logo: Customized Logo
- MOQ: 100 Pcs
- Application: Electronic, Automotive
- Drawing Format: 3D/CAD/DWG//STEP/PDF
- Surface Finish: Anodized Powder Coating
Polishing.sandblasting
- Lead Time: Sample: 3-5 Day
- Service: Customized OEM
- Highlight: customized laser cutting equipment,
sheet metal fabrication machinery,
mass production laser cutter



More Images



Product Description

Customized Factory Laser Cutting for Sheet Metal Fabrication Professional Equipment for Mass Production

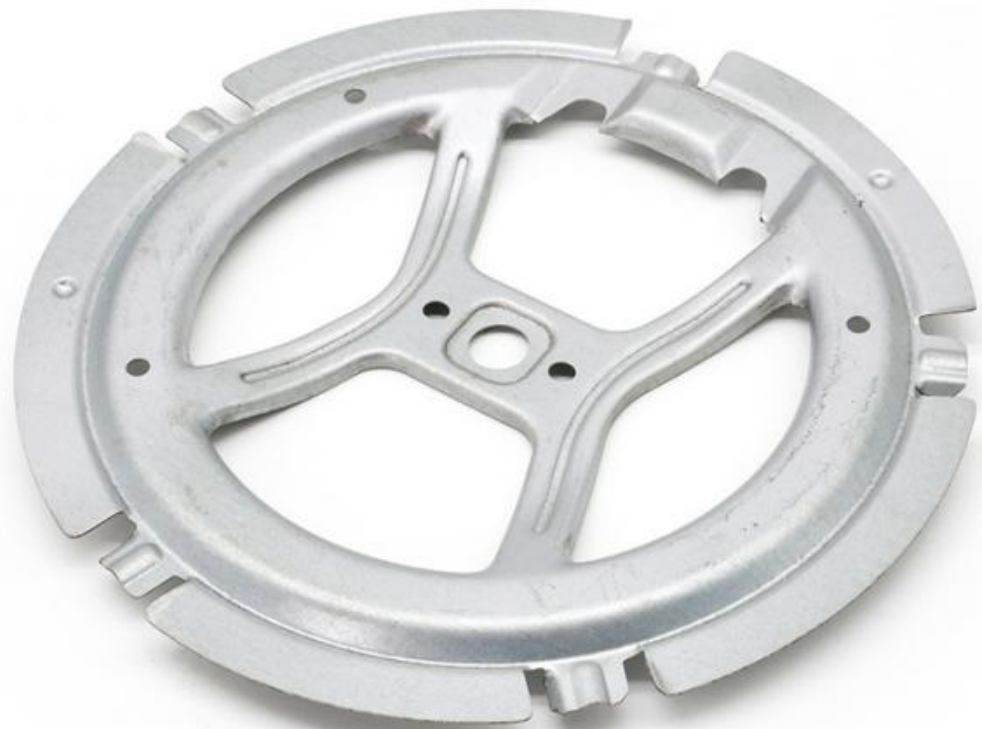
Product Specifications

Attribute	Value
Place of Origin	Guangdong, China
Brand Name	Tampin
Material	Carbon Steel
Process	Laser Cutting, Bending, Stamping
Logo	Customized Logo
MOQ	100 Pcs
Application	Electronic, Automotive
Drawing format	3D/CAD/DWG/STEP/PDF
Surface finish	Anodized, Powder Coating, Polishing, Sandblasting
Lead time	Sample: 3-5 Days
Service	Customized OEM

Product Gallery











Packing & Delivery





To better ensure the safety of your goods, we provide professional, environmentally friendly, convenient and efficient packaging services.

Company Profile

Dongguan Tianpin Hardware Technology Co., Ltd. was established in 2008, located in Dongguan, Guangdong Province, enjoying convenient transportation and beautiful environment. Our company covers an area of 2,000 square meters, combining production and trade operations.

We have strong technical capabilities with experienced management, design and technical personnel specializing in molds, stamping, hardware processing, and product R&D. With about 50 employees, we specialize in metal stamping, CNC machining, and sheet metal fabrication.

Our main products include automotive spare parts, aluminum heat sinks, custom chassis shells, and CNC machining products. With 30 sets of 20-200T stamping equipment, we maintain strict quality control and achieve a monthly output of 500,000 pieces with precision and high-speed production efficiency.

We excel in producing hardware stamping molds, progress molds, and drawing molds, with a monthly capacity of about 800 sets of complete industrial chassis molds and 5,000 sets of industrial chassis products.

Frequently Asked Questions

Who are we?

We are based in Guangdong, China, operating since 2015, serving domestic and international markets including North America, Western Europe, and Southeast Asia. Our team consists of 11-50 professionals.

How can we guarantee quality?

We implement strict quality control measures including pre-production samples and final inspection before shipment.

What can you buy from us?

We specialize in Metal Parts, Heatsinks, and Stamping Parts for various industrial applications.

Why choose us over other suppliers?

With our specialization in precision metal stamping and casting since 1989, we offer strict QC systems, competitive pricing, fast delivery, and excellent service.

What services do we provide?

We accept various delivery terms (FOB, CIF, EXW, etc.) and payment methods (T/T, L/C, PayPal, etc.), and communicate in multiple languages including English, Chinese, and German.



Dongguan Tianpin Hardware Technology Co., Ltd.



+86 010 62574092



sales@tampin-metal.com



tampin-metal.com

Rm. 1208, Building D, Taihua Longqi Square, Changping Dist., Beijing, China