



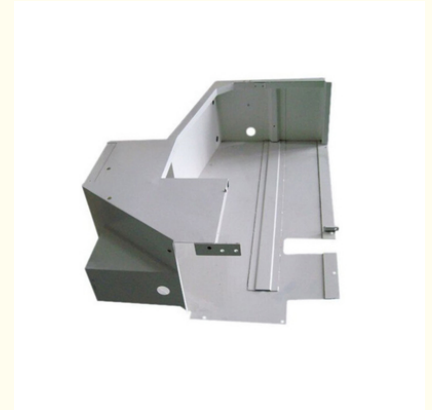
## High-Precision Metal Chassis Shells Custom Sheet Metal Fabrication for Precision Metal Cases

Our Product Introduction

for more products please visit us on [tampin-metal.com](http://tampin-metal.com)

### Basic Information

- Place of Origin: Guangdong, China
- Brand Name: Tampin
- Model Number: OEM
- Minimum Order Quantity: 100
- Price: \$0.05-0.15



### Product Specification

- Material: Carbon Steel
- Process: Laser Cutting Bending Stamping
- Logo: Customized Logo
- MOQ: 100 Pcs
- Application: Electronic, Automotive
- Drawing Format: 3D/CAD/DWG//STEP/PDF
- Surface Finish: Anodized Powder Coating  
Polishing.sandblasting
- Lead Time: Sample: 3-5 Day
- Service: Customized OEM
- Highlight: custom metal chassis shells,  
precision sheet metal fabrication,  
high-precision metal cases



### More Images



Product Description

High-Precision Metal Chassis Shells Custom Sheet Metal Fabrication

Product Specifications

Attribute	Value
Material	Carbon Steel
Process	Laser Cutting, Bending, Stamping
Logo	Customized Logo
MOQ	100 Pcs
Application	Electronic, Automotive
Drawing format	3D/CAD/DWG/STEP/PDF
Surface finish	Anodized, Powder Coating, Polishing, Sandblasting
Lead time	Sample: 3-5 Days
Service	Customized OEM

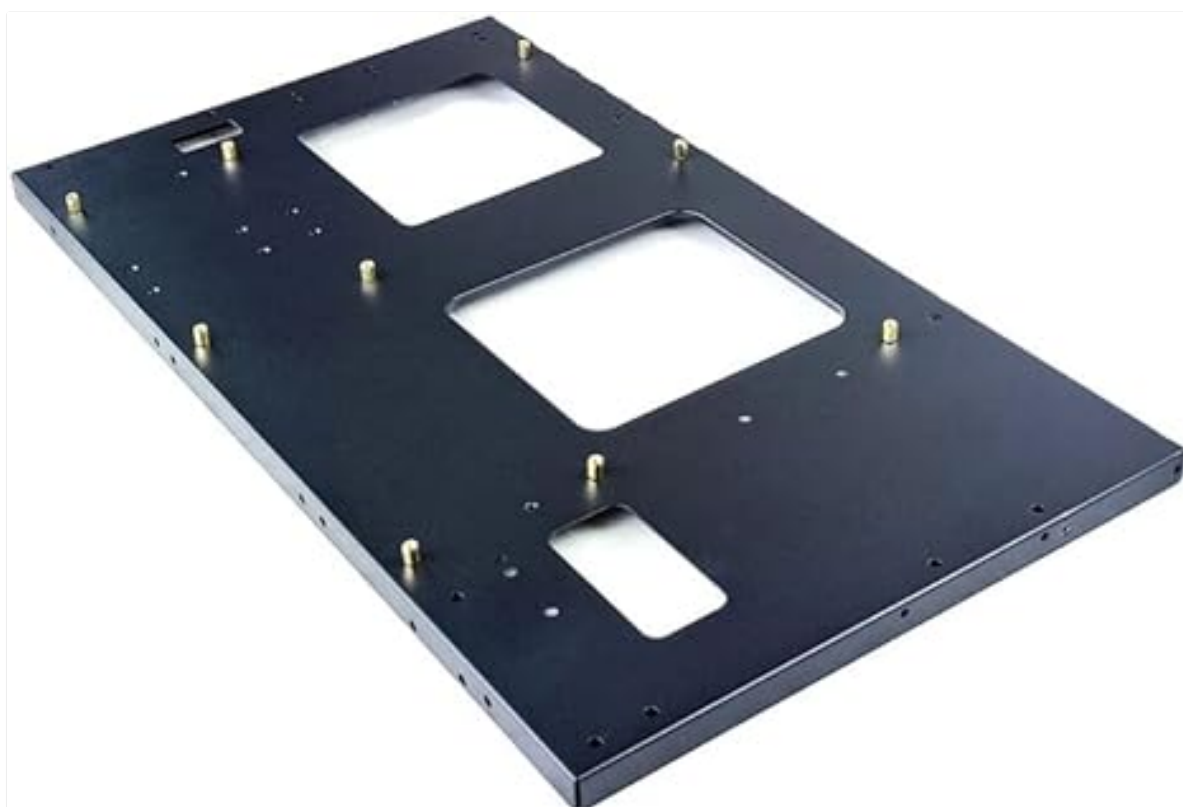
Product Details

Precision-crafted metal chassis shells manufactured through advanced sheet metal fabrication processes including laser cutting, bending, and stamping. Ideal for electronic and automotive applications requiring durable, high-precision metal enclosures.















Packing & Delivery







We provide professional, environmentally friendly packaging to ensure the safety of your goods during transit. Our efficient packaging services combine protection with convenience.

### **Company Profile**

Dongguan Tianpin Hardware Technology Co., Ltd., established in 2008, is located in Dongguan, Guangdong Province. With 2,000 square meters of production space and approximately 50 employees, we specialize in:

- Metal stamping and CNC machining
- Sheet metal fabrication
- Automotive spare parts and aluminum heat sinks
- Custom chassis shells and precision components

Our facility houses 30 sets of 20-200T stamping equipment, enabling monthly production of 500,000 pieces with high precision. We maintain strict quality control and offer competitive pricing with reliable service.

### **Frequently Asked Questions**

#### **Who are we?**

Based in Guangdong, China since 2015, we serve global markets including North America, Europe, and Asia with a team of 11-50 professionals.

#### **How do we guarantee quality?**

Pre-production samples and final inspections ensure consistent product quality before shipment.

#### **What products do we offer?**

Metal parts, heat sinks, and precision stamping components for various industrial applications.

#### **Why choose us?**

With decades of experience since 1989, we combine strict quality control, competitive pricing, fast delivery, and excellent service.

#### **What services do we provide?**

We accept various delivery terms (FOB, CIF, etc.) and payment methods (T/T, L/C, PayPal), with support in multiple languages including English and Chinese.



**Dongguan Tianpin Hardware Technology Co., Ltd.**



+86 010 62574092



sales@tampin-metal.com



tampin-metal.com

Rm. 1208, Building D, Taihua Longqi Square, Changping Dist., Beijing, China