



## Custom Sheet Metal Precision Case Fabrication Aluminum Steel Stamping Electronic Shell Enclosure Box Cabinet for Equipment

Our Product Introduction

for more products please visit us on [tampin-metal.com](http://tampin-metal.com)

### Basic Information

- Place of Origin: Guangdong, China
- Brand Name: TAMPIN
- Model Number: OEM
- Minimum Order Quantity: 100
- Price: \$5.99-8.99



### Product Specification

- Material: Carbon Steel
- Process: Laser Cutting Bending Stamping
- Application: Industrial, Commercial, And Residential Use
- Finish: Anodized Powder Coating  
Polishing.sandblasting
- Drawing Format: 3D/CAD/DWG//STEP/PDF
- Color: Customized Color
- Size: Customer Size
- MOQ: 100pcs
- Logo: Customized Logo
- Service: OEM/ODM
- Highlight: **custom aluminum sheet metal enclosure ,  
precision steel stamping cabinet,  
electronic equipment metal fabrication**



### More Images



**Custom Sheet Metal Precision Case Fabrication**

High-quality aluminum and steel stamping electronic shell enclosure boxes and cabinets designed for industrial equipment applications.

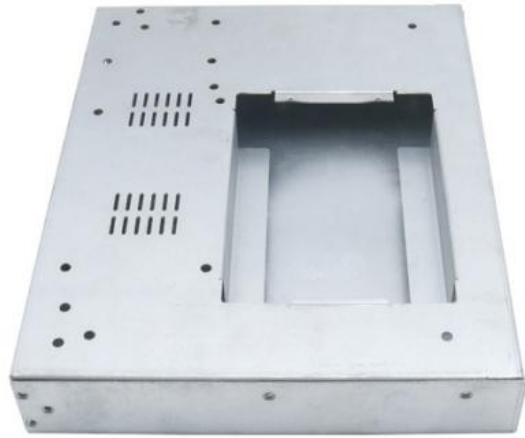
**Product Specifications**

Attribute	Value
Material	Carbon steel
Process	Laser Cutting, Bending, Stamping
Application	Industrial, Commercial, and Residential Use
Finish	Anodized, Powder Coating, Polishing, Sandblasting
Drawing format	3D/CAD/DWG/STEP/PDF
Color	Customized Color
Size	Customer Size
MOQ	100pcs
Logo	Customized Logo
Service	OEM/ODM

**Product Features**

- Precision fabricated from high-grade carbon steel
- Multiple finishing options available
- Custom sizes and colors to meet specific requirements
- Accepts OEM/ODM orders with custom logos
- Wide range of industrial applications

**Product Images**





### **Packaging & Delivery**

We have a perfect logistics system. If you don't have your own forwarder, we will provide you with the most suitable transport solution.

## PACKING AND SHIPPING



### OEM/ODM SERVICE



**Format of the drawing:** PDF, JPEG, CAD, IJS, STP, SOLIDWORKS, ETC.

**Custom Logo:** Acceptable, such as company name, website, principle and so on.

**Sample time:** 10-25 days. But it depends on the order quantity and the specific product. Different product may has different lead time.

**Advantages for Mold:** One time paid, Reusable, Quick to build.

### QC AND AFTER-SALES SERVICE



1. First article inspect will be made for each new product.
2. Strict inspection before shipment.
3. Material and measurement reports will be provided.
4. If there is quality problem, we will replace goods or return funds.

### Company Profile

Dongguan Tianpin Hardware Technology Co., Ltd. was established in 2008, located in Dongguan, Guangdong Province. With 2,000 square meters of production space and about 50 employees, we specialize in metal stamping, CNC machining, and sheet metal fabrication.

#### WHY CHOOSE US

- Skilled Personnel**  
We have a highly qualified team of engineers capable of providing personalized design and technical support.
- Large Factory Space**  
Our modern production facility is fully equipped to meet large-scale custom manufacturing needs.
- Customization Flexibility**  
We focus on meeting unique customer requirements and provide a variety of customization services.
- Extensive Production Experience**  
With over 22 years of metal manufacturing experience, we ensure high quality and stable production capabilities.
- Precision Machining**  
We utilize advanced precision equipment and technology to ensure product accuracy and consistency.
- Comprehensive Customer Service**  
From design to delivery, we offer full service support to ensure customer satisfaction and production efficiency.

Strength factory, quality assurance





### Our Advantages

- Rich experience in metal manufacturing industry
- 30 sets of 20-200T stamping equipment
- Monthly output capacity of 500,000 pieces
- Precision and high-speed production efficiency
- Strict quality control measures





### Frequently Asked Questions

#### Do you have any MOQ?

No limit. More quantity has better price, we will check the best price for you.

#### What's the delivery time?

Generally within 7-15 days, we will arrange for you as soon as possible.

#### What can you buy from us?

Metal Stamping, Toggle Latch, Casting, Clamp, Crate Clip, Server Chassis.

#### Which shipping method do you usually use?

By train/sea DDP, by express, we can also ship with your own forwarder.

#### How do I know if you have shipped my order?

Tracking number will be provided as soon as your order is shipped.



**Dongguan Tianpin Hardware Technology Co., Ltd.**



+86 010 62574092



sales@tampin-metal.com



tampin-metal.com

Rm. 1208, Building D, Taihua Longqi Square, Changping Dist., Beijing, China