



## Cabinet Angle Brackets Single-side Structure Furniture Industrial Wood Construction Application

Our Product Introduction

### Basic Information

- Minimum Order Quantity: 100 pieces
- Price: \$0.45/pieces 100-999 pieces



### Product Specification

- Standard Or Nonstandard: Nonstandard
- Processing Way: Stamping,Bending,etc
- Color: Silver,Black,Customized
- Service: Customized Service
- Sample: Free But You Need To Pay The Shipping Cost
- Delivery Time: 8-15 Work Days
- Highlight:
  - Wood Construction Application Cabinet Angle Brackets
  - , Furniture Industrial Application Cabinet Angle Brackets
  - , Single-side Structure Cabinet Angle Brackets

for more products please visit us on [tampin-metal.com](http://tampin-metal.com)

## Product Description

### Cabinet Angle Brackets - Single-side Structure for Furniture & Industrial Wood Construction

#### Product Specifications

Attribute	Value
Standard or Nonstandard	Nonstandard
Processing Method	Stamping, Bending, etc.
Available Colors	Silver, Black, Customized
Service	Customized Service
Samples	Free (customer pays shipping)
Delivery Time	8-15 work days

#### Product Details

**Material:** Stainless Steel, Aluminum, Carbon Steel

**Surface Treatment:** Polishing, Powder Coating, Deburring, Plating

**Size:** Various sizes available

**Payment Terms:** T/T, L/C, D/A, D/P, Western Union, MoneyGram, PayPal, etc.



#### Packaging Information

**Selling Unit:** Single Unit

**Package Dimensions:** 20×20×15 cm

**Gross Weight:** 0.02 kg per unit

#### About Our Company



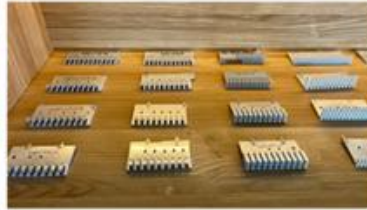
## Our Company





## Professional Customized Service

From Design, Research And Development To Production, We Are Committed To Providing One-stop Services For More Customers: Insisting On Designing From The Perspective Of Product Production, Fully Meeting The Different Needs Of Enterprises, And Making More Ideas Possible





## INSPECTION PROCESS

# EIGHT CORE PROCESSES ONLY IN PURSUIT OF ACHIEVING SUB-2000 DPPM EFFORTS

STANDARDIZED, PROCESS-ORIENTED REFINED PRODUCTION  
STANDARD EFFORTS TO PROVIDE YOU WITH UP TO 99.8%  
QUALIFIED STRING OF PRECISION PARTS



### DFM EVALUATION AND OPTIMIZATION

Pre-manufacturing feasibility assessment and optimization



### CUSTOMIZED OPERATING INSTRUCTIONS

Benchmarking, assembly, and inspection criteria development for identification of key dimensions



### SAMPLE FULL SIZE INSPECTION

For DFM and work instructions standard full-size inspection proofing process problems



### PRODUCT PROJECT SUMMARY

Summarize the proofing problems, close the problem points and continuously optimize the production process!



### COMPLETENESS

Strictly formulate packaging standards for product twinning and control the complete delivery of finished products to customers.



### FOC

Perform according to AQC standards and requirements



### SPC/CPK

Control of special requirements and process implementation of CPK > 1.33 for key dimensions



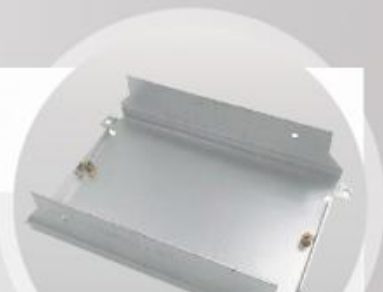
### FIRST INSPECTION / INSPECTION

Strictly in accordance with the standard of drawings and work instructions

## PRODUCT CATEGORY OUR ADVANTAGES



SHEET METAL  
FABRICATION

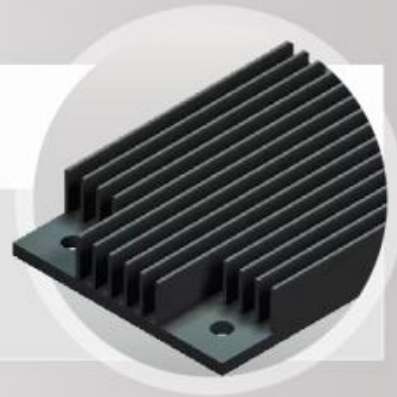




*STAMPING  
PARTS*



*ALUMINUM  
PROFILE*



*CRATE  
CLIP*



*STAINLESS STEEL  
PRECISION CASTING*



*METAL STAND  
FOR COMPUTER*



## SHIPPING & PAYMENT >>



### PAYMENT



T/T

L/C

### SHIPPING

- If the quantity of order is not very big, we could send them to you by express delivery, such as TNT, DHL, UPS OR EMS etc.

If order is big, we will advise you use Air Shipping or Sea Shipping through your nominated forwarder agent. Our long-term cooperated agent also available.



1. Inner plastic bags and bubble bags, then in carton or pallet outside.
2. As per client's requirement.







**Q** Do you have any MOQ?

**A** No limit. More quantity has better price, we will check the best price for you.

**Q** What's the delivery time?

**A** Generally within 7-15 days, we will arrange for you as soon as possible.

**Q** What can you buy from us?

**A** Metal Stamping/Clamp/Crate Clip/CNC Machining/Monitor Stand/Sheet Metal Fabrication

**Q** Which shipping method do you usually use?

**A** By train/sea DDP, by express, we can also ship with your own forwarder.


**Q** How do I know if you have shipped my order?


**A** Tracking number will be provided as soon as your order is shipped.

**Q** Why should you buy from us not from other suppliers?

**A** Established in 2008, Tianpin Technology is specialized in precision metal stamping& sheet metal fabrication, with wide-range production lines cover all kinds of application areas. Strict QC system, reasonable price, fast delivery and best service are all our advantages.

WELCOME TO **TIANPIN**





**TIANPIN**

+86-131 2039 1637

[sales@tampin-metal.com](mailto:sales@tampin-metal.com)

Building 8, No.1 Lihua Road, Yalangwei Village, Qinghai Town,  
Dongguan City 523649, Guang Dong, China

**CONTACT US**

Feel free to contact us at any time to learn more about our capabilities and services.  
We look forward to collaborating with you!



**Dongguan Tianpin Hardware Technology Co., Ltd.**



+86 010 62574092



[sales@tampin-metal.com](mailto:sales@tampin-metal.com)



[tampin-metal.com](http://tampin-metal.com)

Rm. 1208, Building D, Taihua Longqi Square, Changping Dist., Beijing, China